

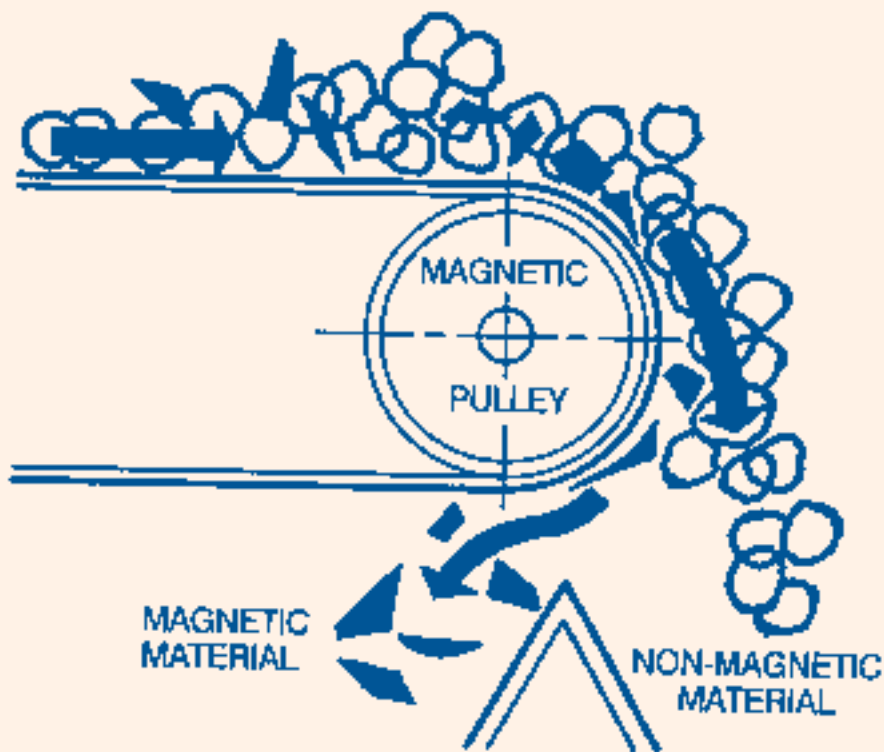
STEARNS ELECTROMAGNETIC PULLEYS...guard product purity and protect your plant

REMOVES TRAMP IRON, EVEN ON FAST CONVEYORS!

Nearly one hundred years of expertise and leadership in the design and development of magnetic equipment is behind every Stearns electromagnetic pulley. Now, more than ever, with the very growing emphasis on production efficiency and reduced operation cost in industry, Stearns experience in pulley design is important to simple, effective means of magnetic separation and protection in normal material handling conveyor processes –without altering the present system. You can select a pulley that will assure positive separation of ferrous materials at belt speeds as high as 500 FPM. Stearns Pulleys feature:



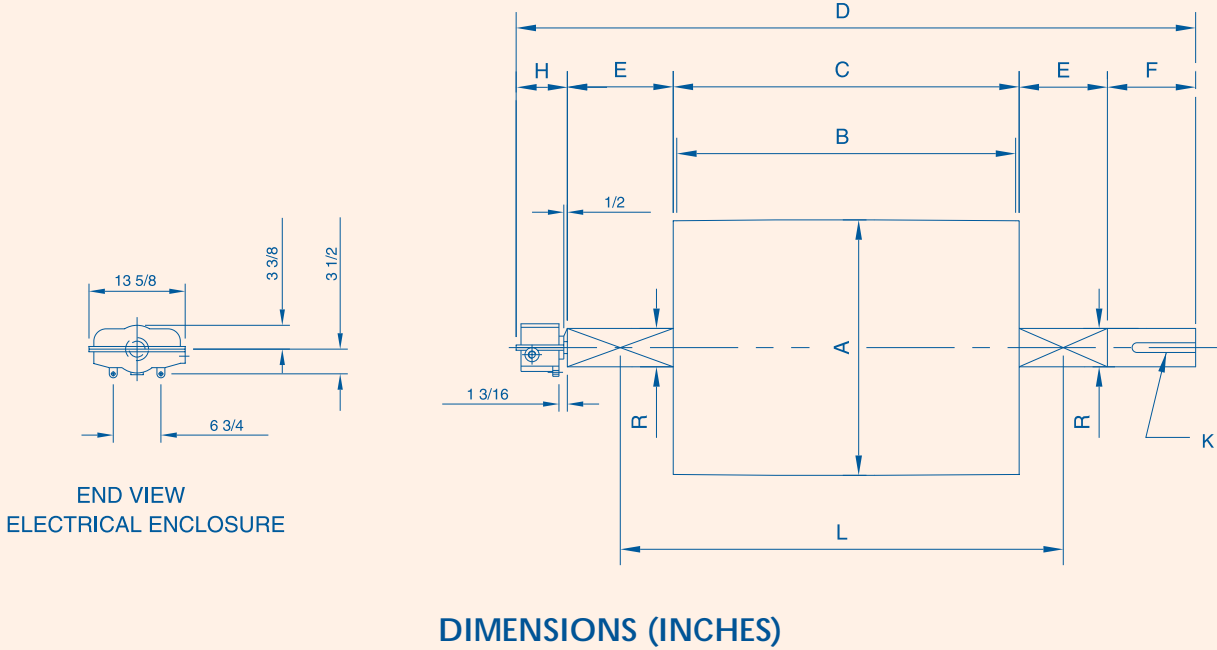
- **Rugged Heavy Duty Designs**
- **Deep Field Penetration**
- **Can be used for Specialized Sizing and Magnetic Separation with an Ohio Magnetics/Stearns Variable Voltage Rectifier**



Principle of Operation

For purification and tramp iron protection, the magnetic pulley is installed as a head pulley in the belt conveyor handling bulk materials. Ferrous material is attracted toward the face of the pulley, then carried around past the influence of the magnet for discharge, non-magnetic material passes over pulley in normal trajectory, providing continuous automatic separation.

ELECTROMAGNETIC PULLEY



TECHNICAL SPECIFICATIONS AND DIMENSIONS (INCHES)

MODEL	A DIA.	B BELT WIDTH	WATTS CU	WATTS AL	WEIGHT CU	WEIGHT AL	C	D	E	F	R DIA.	K	H	L
24 INCH WIDTH BELT														
1824	18	24	1025	1275	1265	981	25	54-1/2	9	5	2-15/16	3/4 X 3/8	6-1/4	36
2424	24	24	1640	1600	2210	1650	25	57-1/4	10	6	3-7/16	7/8 X 7/16	6-1/4	37
3024	30	24	1735	1800	3080	2410	25	60-1/4	11	7	3-15/16	1 X 1/2	6-1/4	38
3624	36	24	2055	2130	4000	3100	25	63-1/4	12	8	4-7/16	1-1/8 X 9/16	6-1/4	39
30 INCH WIDTH BELT														
1830	18	30	1470	1550	1610	1110	31	60-1/4	9	5	2-15/16	3/4 X 3/8	6-1/4	42
2430	24	30	1770	1830	2460	1800	31	66-1/4	11	7	3-15/16	1 X 1/2	6-1/4	44
3030	30	30	2210	2320	3580	2740	31	69-1/4	12	8	4-7/16	1-1/8 X 9/16	6-1/4	45
3630	36	30	2700	2580	4390	3300	31	69-1/4	12	8	4-7/16	1-1/8 X 9/16	6-1/4	45
36 INCH WIDTH BELT														
1836	18	36	1675	1765	1890	1290	37	69-1/4	10	6	3-7/16	7/8 X 7/16	6-1/4	49
2436	24	36	2215	2270	2830	2000	37	72-1/4	11	7	3-15/16	1 X 1/2	6-1/4	50
3036	30	36	2390	2430	4370	3150	37	75-1/4	12	8	4-7/16	1-1/8 X 9/16	6-1/4	51
3636	36	36	3200	3520	4900	3790	37	79-1/2	13	9	4-15/16	1-1/4 X 5/8	6-1/4	52
42 INCH WIDTH BELT														
3642	36	42	3610	4030	6430	4305	43	85-1/2	13	9	4-15/16	1-1/4 X 5/8	6-1/4	58
48 INCH WIDTH BELT														
2448	24	48	3435	3470	4180	2800	49	87-1/4	12	8	4-7/16	1-1/8 X 9/16	6-1/4	63
3048	30	48	3775	3700	5935	4025	49	91-1/2	13	9	4-15/16	1-1/4 X 5/8	6-1/4	64
3648	36	48	4660	4630	7480	5085	49	69-1/2	15	10	5-7/16	1-3/8 X 11/16	6-1/4	66